



Mayfield East Public School Student Enrolment

Procedures and Protocols



Student Enrolment Procedures and Protocols

Contents

Document History.....	2
Synopsis.....	3
Managing enrolments in schools.....	3
Local Enrolment.....	3
Residential address check.....	4
Enrolment cap.....	5
Enrolment Buffer.....	5
Non-local enrolment.....	5
Criteria.....	6
Enrolment Panel.....	6
Enrolment time frame.....	6
Appeals.....	6

Document History

Version	Author	Date
1.0	Melinda Horgan	26/8/2019

Student Enrolment Procedures and Protocols

Synopsis

This document supports Mayfield East Public School's implementation of the NSW Department of Education's Enrolment of Students in NSW Government Schools Policy (July 2019) and should be read in conjunction with the [General Enrolment Procedures](#).

Managing enrolments in schools

A student is entitled to enrol at the local school that the student is eligible to attend if their home is within that school's local intake area. Parents may apply to enrol their child in the school of their choice. Acceptance is subject to the child being eligible to attend and the school can accommodate the child. (General Enrolment Procedures: 9)

Parents may enrol a child if they turn 5 years of age on or before 31 July in that year. Students identified as gifted and talented, who are aged 4 years or older at 31 January of the year of enrolment may only be enrolled in accordance with the Gifted and Talented policy. (General Enrolment Procedures: 2)

Local Enrolment

To determine if a student's home is within a school's local intake area please use the School Finder App by clicking on the button below.



Residential address check

Under the Education Act 1990, principals may require proof of address to their satisfaction in order to establish a child's entitlement to enrol in the school. However, any requests for proof of address must be reasonable in the circumstances. Schools that are at or nearing their local enrolment buffer as calculated in accordance with sections 9.1 and 9.2 will use the following 100-point residential address check to determine the student's entitlement to enrol at the school.

Document showing the full name of the child's parent	Points
1. Only one of (i.e. no additional points for additional documents) <ul style="list-style-type: none"> 1.1. Council rates notice 1.2. Lease agreement through a registered real estate agent for a period of at least 6 months or rental board bond receipt 1.3. Exchanged contract of sale with settlement to occur within the applicable school year 	40
2. Any of the following <ul style="list-style-type: none"> 2.1. Private rental agreement for a period of at least 6 months 2.2. Centrelink payment statement showing home address 2.3. Electoral roll statement 	20 each
3. Any of the following documents <ul style="list-style-type: none"> 3.1. Electricity or gas bill showing the service address* 3.2. Water bill showing the service address* 3.3. Telephone or internet bill showing the service address* 3.4. Drivers licence or government issued ID showing home address* 3.5. Home building or home contents insurance showing the service address 3.6. Motor vehicle registration or compulsory third party insurance policy showing home address 3.7. Statutory declaration stating the child's residential address, how long they have lived there, and any supporting information or documentation of this 	15 each

* up to three months old

NB: Where a parent is able to give good reasons why they are unable to present documents, or in exceptional circumstances, principals may waive or vary the 100-point residential address check NSW Department of Education | PD/2002/0006/01/v1.0.0 10 requirements when assessing a child's entitlement to enrol at the school. If this is to occur, principals are required to seek the approval of the Director, Educational Leadership.

Student Enrolment Procedures and Protocols

Enrolment cap

The Enrolment Cap for a school is established centrally based on permanent accommodation.

The enrolment cap for Mayfield East Public School is 231.

(General Enrolment Procedures: 9.1)

Enrolment cap



Buffer level

Local enrolment buffer

Within the enrolment cap, a number of enrolment places (the buffer) must be set aside for the enrolment of local students arriving throughout the year. The size of the buffer will differ in each school based on historical data, enrolment fluctuations and on the number of families moving into or out of the area. The size of the local enrolment buffer is set locally by the principal and approved by the Director, Educational Leadership.

It is reviewed annually and set in time for assessing applications for the following year's enrolment intake. Places in the local enrolment buffer are not to be offered to non-local students. (General Enrolment Procedures: 9.2)

The Enrolment Buffer for Mayfield East Public School is 8.



Enrolment

Non-local enrolment

Non-local enrolment applications are only considered by schools that can accommodate the child below the set local enrolment buffer level. (General Enrolment Procedures: 9.4)

Except for enrolments at the commencement of the school year, schools that have not reached their local enrolment buffer level should only accommodate non-local enrolments into classes with available places. (General Enrolment Procedures: 9.4)

Non-local enrolment applications include the [Application to enrol in a NSW Government school](#) and a non-local enrolment application form. The non-local enrolment application form is developed by the school and requires the applicant to address the selection criteria and provide supporting documentation. (General Enrolment Procedures: 9.4.1)

Student Enrolment Procedures and Protocols

Criteria

Due to Mayfield East Public School exceeding our current enrolment cap, we have not set a criteria for the enrolment of non-local students. If this is necessary in the future, the criteria will be developed by the Principal, Mrs Robyn Christie, after consultation with the school community. (General Enrolment Procedures: 9.4.2)

Enrolment Panel

When demand for non-local enrolment exceeds the number of places available below the local enrolment buffer the school will establish an Enrolment Panel to consider all applications against the above criteria. (General Enrolment Procedures: 9.4)

1	School Executive - Chairperson
2	Staff member nominated by the Principal
3	School community member nominated by the school's parent organisation

Enrolment time frame

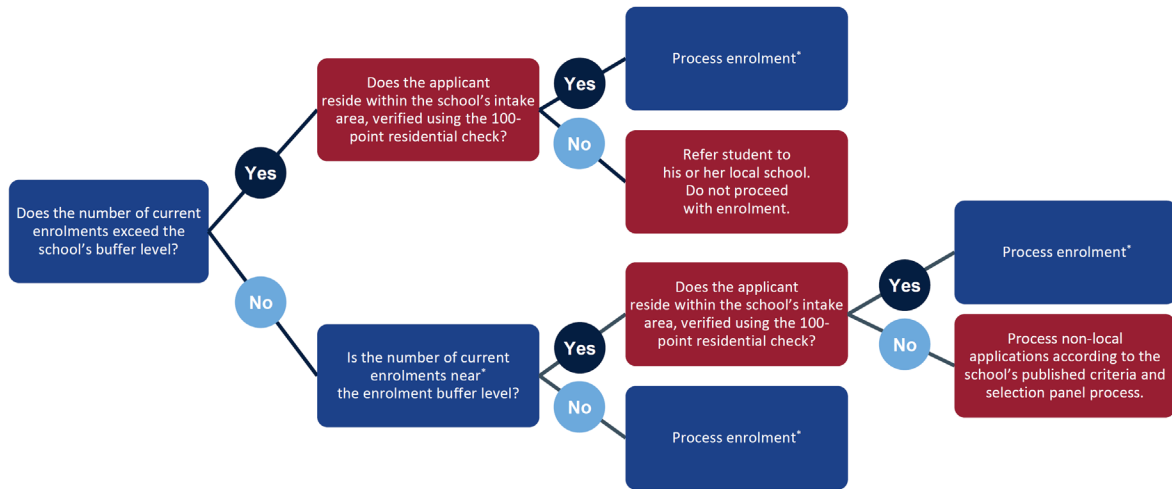
It is anticipated that enrolment of students should not exceed 10 days from receipt of completed [Application to Enrol in a NSW Government School](#). Where circumstances indicate that this timeframe may not be met Principals are require to consult their Director, Educational Leadership.

Appeals

Unsuccessful non-local applicants may appeal against the decision of the enrolment panel. The appeal is made in writing to the principal and sets out the grounds of the appeal. If necessary, the principal should provide or arrange assistance, such as an interpreter, to enable the appeal to be set out in writing. The purpose of the appeal is to determine whether the stated criteria have been applied equitably. If the principal is not on the enrolment panel, the principal considers the appeal and makes a determination. Otherwise, the appeal may be determined by the Director, Educational Leadership. (General Enrolment Procedures: 9.4.5)


Student Enrolment Procedures and Protocols

Enrolment application decision tree



*For more information, visit: <https://education.nsw.gov.au/policy-management-schools/media/documents/Decision-tree-Revised-enrolment-policy-2019.pdf>

Director's Endorsement

School	Mayfield East Public School
Year	2019
Enrolment Cap	231
Buffer	8
Approaching Buffer – Non Local Enrolments requiring Director approval. <i>When the school's enrolment level is close to the local enrolment buffer, the principal is required to inform the principal of the child's local school when considering the non-local enrolment application, and to seek approval of the Director, Educational Leadership before making an offer to enrol the child.</i>	N/A
I confirm my endorsement of the figures identified above.	
Signature:	
Josie Bailey Director, Educational Leadership Callaghan Network	
August 2019	